

# LEISTER

## The suitable welding shoe for every application

### WELDPLAST S2 / FUSION 2/3/3C

#### Seam geometries



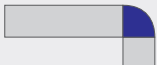
Fillet weld seam



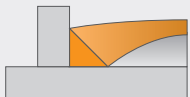
V-seam / X-seam



Overlap seam



Corner outside seam



Corner seam



WELDPLAST S2



FUSION 2



FUSION 3



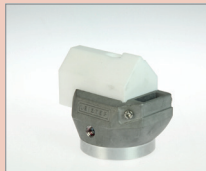
FUSION 3C

#### Leister Integrated Air System (IA):

The air guidance is integrated into the welding shoe. This enables the turning of the shoe 360° into every desired welding and seam position.

#### Naming on the basis of ex K-5/6 IA:

K: Shape of seam | 5/6: Material thickness | IA: Integrated air system



**K-5/6 IA** Fillet weld, 5/6 mm  
Article No.: 145.943



**K-8/10 IA** Fillet weld, 8/10 mm  
Article No.: 145.944



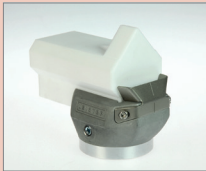
**K-12 IA** Fillet weld, 12 mm  
Article No.: 145.815



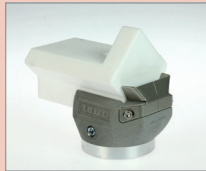
**K-15 IA** Fillet weld, 15 mm  
Article No.: 145.812



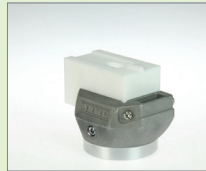
**K-20 IA** Fillet weld, 20 mm  
Article No.: 145.940



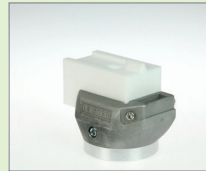
**K-25 IA** Fillet weld, 25 mm  
Article No.: 145.816



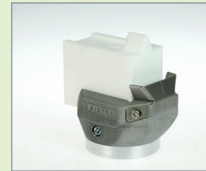
**K-30 IA** Fillet weld, 30 mm  
Article No.: 145.817



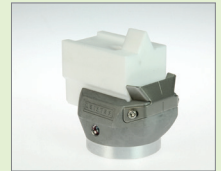
**V-5/6 IA** V-seam, 5/6 mm  
Article No.: 145.912



**V-8/10 IA** V-seam, 8/10 mm  
Article No.: 145.915



**V-12 IA** V-seam, 12 mm  
Article No.: 145.907



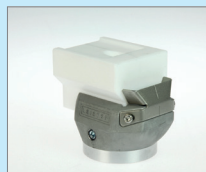
**V-15 IA** V-seam, 15 mm  
Article No.: 145.903



**UBL-25 IA** Overlap seam, 25 mm  
Article No.: 145.896



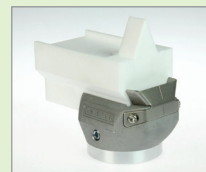
**UBL-30 IA** Overlap seam, 30 mm  
Article No.: 145.947



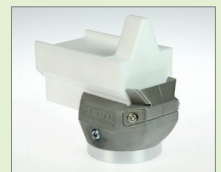
**UBL-35 IA** Overlap seam, 35 mm  
Article No.: 145.897



**V-20 IA** V-seam, 20 mm  
Article No.: 145.909



**V-25 IA** V-seam, 25 mm  
Article No.: 145.916



**V-30 IA** V-seam, 30 mm  
Article No.: 145.905



**CO-8 IA** Corner outside, 8 mm  
Article No.: 146.643



**CO-10 IA** Corner outside, 10 mm  
Article No.: 146.645



**CO-12 IA** Corner outside, 12 mm  
Article No.: 146.649



**CO-15 IA** Corner outside, 15 mm  
Article No.: 146.651



**CL-14 IA** Corner seam, Ø 14 mm  
Article No.: 145.811



**CS-20 IA** Corner seam, Ø 20 mm  
Article No.: 145.488



**45° Angled adapter WP S2**  
Article No.: 139.460



**90° Angled adapter WP S2**  
Article No.: 139.461



**45° Angled adapter FUSION 2**  
Article No.: 147.602



**90° Angled adapter FUSION 2**  
Article No.: 147.601



**45° Angled adapter FUSION 3/3C**  
Article No.: 148.817



**90° Angled adapter FUSION 3/3C**  
Article No.: 148.816